

## 12 MACHINE COMPONENTS

### 12.1 PART LIST

Part No.	Description	Size No.	Q'ty	Part No.	Description	Size No.	Q'ty
1	Base (Bottom Plate)		1	47	Roller		1
2	Base (Left Part)		1	48	Ball Bearing	6004ZZ	2
2-1	Nut	M8	2	48-1	C-Ring	S-20	2
3	Base (Right Part)		1	49	Roller Shaft		1
4	Base (Front Part)		1	50	Hex. Socket Cap Screw	M10x20	2
4-1	Hex. Cap Bolt	M8x16	2	50-1	Spring Washer	M10	2
4-2	Washer	M8	4	51	Pedal Plate		1
5	Hex. Cap Bolt	M12x40	2	53	Pedal Switch		1
6	Nut	M12	2	53-1	Micro Switch		1
8	Hex. Cap Bolt	M8x16	6	54	Round Head Screw	M4x10	4
8-1	Washer	M8	6	55	Hex. Socket Cap Screw	M6x8	1
9	Plate		1	56A	Emergency Switch Box		1
10	Hex. Socket Cap Screw	M5x8	4	56-1	Pipe		1
11	Coolant Tank		1	57-1	Flat Head Cross Screw		4
12	Hex. Cap Bolt	M8x16	2	58	Hex. Socket Cap Screw	M5x8	4
13	Coolant Gauge		1	58-1	Nut	M4	4
13-1	Nut	M10	2	59A	Emergency Switch		1
13-2	Washer	M10	2	60A	Handle		1
14	Hex. Cap Bolt	3/16"	2	60-1	Hex. Socket Cap Screw	M8x20	2
15	Tank Cover		1	60-2	Nut	M8	2
16	Filter		1	61	Handle		1
17	Pump		1	61-1	Nut	M12	1
18	Hex. Socket Cap Screw	M6x25	2	63	Locking Lever		1
18-1	Washer	M6	2	63-1	Set Screw	M8x10	1
22	Hose Clamp	13mm	1	64	Hex. Socket Cap Screw	M10x35	1
23	Hose	5/16"x235cm	1	64-1	Spring Washer	M10	1
23-1	Hose	1"x45cm	1	65	Shaft Nut		1
24	Coolant and Chip Tray		1	65-1	Oil Seal		1
24-1	Block Plate		1	65-3	Disk		1
25	Mounting Bracket		2	65-4	Spring Washer	M8	4
26	Spring Washer	M10	4	65-5	Hex. Socket Cap Screw	M8x30	4
27	Hex. Socket Cap Screw	M10x20	4	66A	Shaft		1
28	Washer	M10	4	68	Swivel Arm		1
29	Hex. Cap Bolt	M10x20	4	68-1	Hex. Cap Bolt	M10x35	1
29-1	Washer	M10	4	69	Scale		1
30	Hex. Cap Bolt	M12x40	2	70	Rivet	2.3x4	2
31	Nut	M12	2	71	Pin		1
32	Scale		1	72	Hollow Pin	∅ 2.5x16	1
33	Round Head Screw	M5x10	2	73	Spring		1
34	Nut		1	74	Bushing		1
34-1	Washer	M34	1	75	Bracket		1
35	Switch		1	76	Spring Washer	M8	2
36	Emergency Switch		1	77	Hex. Socket Cap Screw	M8x25	2
37	Grommet		2	78	Knob		1
38	Grommet		1	79	Jam Nut	M35	1
39	Track		1	80	Star Washer	M35	1
40	Hex. Socket Cap Screw	M8x35	2	81	Anti-Dust Cover	M35	2
40-1	Nut	M8	2	82	Ball Bearing	32007	2
40-2	Spring Washer	M8	2	83	Shaft		1
41	Set Screw	M6x12	4	84	Hex. Cap Bolt	M10x45	1
42	Washer		1	85	Nut	M10	2
43	Handle	M8x25	1	86A	Pointer		1
44	Roller Stand		1	87	Hex. Socket Cap Screw	M5x8	1
45	Hex. Cap Bolt	M12x25	2	88-2	Set Screw	M8x10	1
46	Spring Washer	M12	2	92B	Table		1
46-1	Washer	M12	2	92-1	Set Screw	M6x12	1

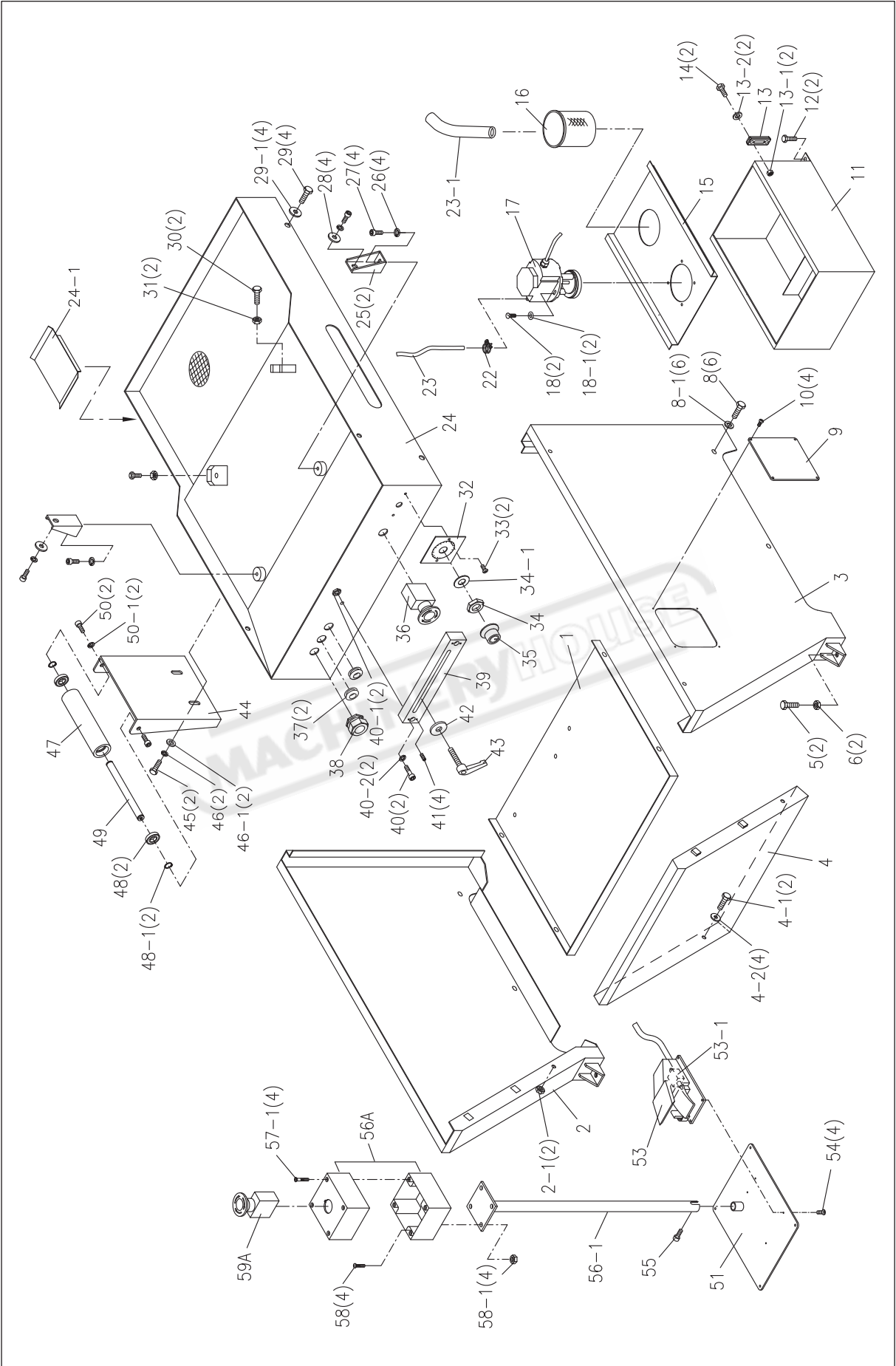
**PART LIST**

Part No.	Description	Size No.	Q'ty	Part No.	Description	Size No.	Q'ty
92-2	Changeable Plate		1	151	Reduction Unit		1
92-3	Hex. Socket Cap Screw	M8x16	4	152	Key	8x8x30	1
94	Bar-Stop-Rod		1	152-1	Vent Screw		1
95	Bar-Stop		1	153	Hex. Cap Bolt	M8x30	4
96	Handle	M10x35	1	153-1	Spring Washer	M8	4
97	Scale		1	154	Motor		1
98	Rivet		3	154-1	Junction Box		1
102	No-Burr Jaw		1	155	Key	8x7x35	1
103	Hex. Socket Cap Screw	M6x20	2	156	Anchoring Dowel		1
104	Counter Vise Jaw		1	157	Hex. Socket Cap Screw	M8x25	4
105	Hex. Socket Cap Screw	M6x15	2	157-1	Spring Washer	M8	4
106	Vise Jaw		1	158	Hollow Pin	∅6x20	2
107	Flat Head Machine Screw	M6x15	2	159	Coupling Fork		1
108	Vise		1	160	Pin on Fork		1
109	Dovetail Plate		1	161	C-Ring	S-20	2
110	Nut	M5	3	162	Nut		1
111	Set Screw	M5x25	3	163	Rod Supporting Block		1
112	Vise Screw for Hydraulic Drive		1	164	Hex. Socket Cap Screw	M10x30	1
112-1	Hex. Socket Cap Screw	M8x16	1	164-1	Spring Washer	M10	2
112-2	Washer	M8	1	165	Nut	M10	1
113	Key	5x5x15	1	166	Hex. Socket Cap Screw	M10x40	1
114	Hydraulic Cylinder (Vise)		1	167	Adjustable Stop		1
115	Spring Washer	M8	4	168	Handle	M8x25	1
116	Hex. Socket Cap Screw	M8x25	4	169	Stop Bar		1
117	Hand Wheel		1	170	Adjustable Stop		1
117-1	Spring Washer	M6	1	170-1	Set Screw	M8x10	1
117-2	Hex. Socket Cap Screw	M6x25	1	171	Hydraulic Cylinder (Arm)		1
117-3	Bushing		1	172	Bushing		2
118	Set Screw	M8x10	1	173	Hex. Socket Cap Screw	M12x20	2
120	Vise Seat		1	174A	Limit Switch Plate		1
122	Vise Setting Plate		1	175	Spring Washer	M8	4
123	Hex. Socket Cap Screw	M10x35	2	176	Nut	M8	4
124	Washer	3/4"x37x3	1	177	Spring Washer	M6	2
125	Lock Lever Device		1	178	Hex. Socket Cap Screw	M6x12	2
127	Handle		1	179	Limit Switch		2
128	Setting Plate		1	180	Hex. Socket Cap Screw	M6x25	4
129	Bushing		1	181	Spring Holder		1
130	Hex. Socket Cap Screw	M8x20	2	182	Nut	M8	2
130-1	Spring Washer	M8	2	183	Hex. Cap Bolt	M12x30	2
131	Electric Box Holder		1	183-1	Spring Washer	M12	2
132	Spring Washer	M8	4	184	Cylinder Guard		1
133	Hex. Socket Cap Screw	M8x20	4	185	Hex. Socket Cap Screw	M6x60	2
135	Hex. Socket Cap Screw	M10x25	2	185-1	Hex. Socket Cap Screw	M5x8	1
136	Spring Washer	M10	2	186	Hex. Socket Cap Screw	M10x35	4
138	Hex. Socket Cap Screw	M6x25	2	186-1	Spring Washer	M10	4
138-1	Washer	M6	2	187	Cylinder Coupling		1
139	Nut	M6	2	188	Spring Hook	3/8"	1
140-5	Magnetic Switch		2	189	Spring		1
140-6	Overload Relay	1.2A	1	190	Setting Bushing		1
140-8	Hex. Cap Bolt	M6x15	2	191	Washer	M8	1
140-11	Overload Relay		1	192	Hex. Socket Cap Screw	M8x35	1
142	Hex. Socket Cap Screw	M5x8	10	193A	Saw Arm		1
143	Nut	M5	4	194	Hex. Socket Cap Screw	M10x30	4
146	Round Head Screw	M5x10	4	194-1	Spring Washer	M10	4
147-2	Main Connect Switch		1	195	Limit Switch		1
147-5	Speed Selector		1	195-1	Switch Pin		1

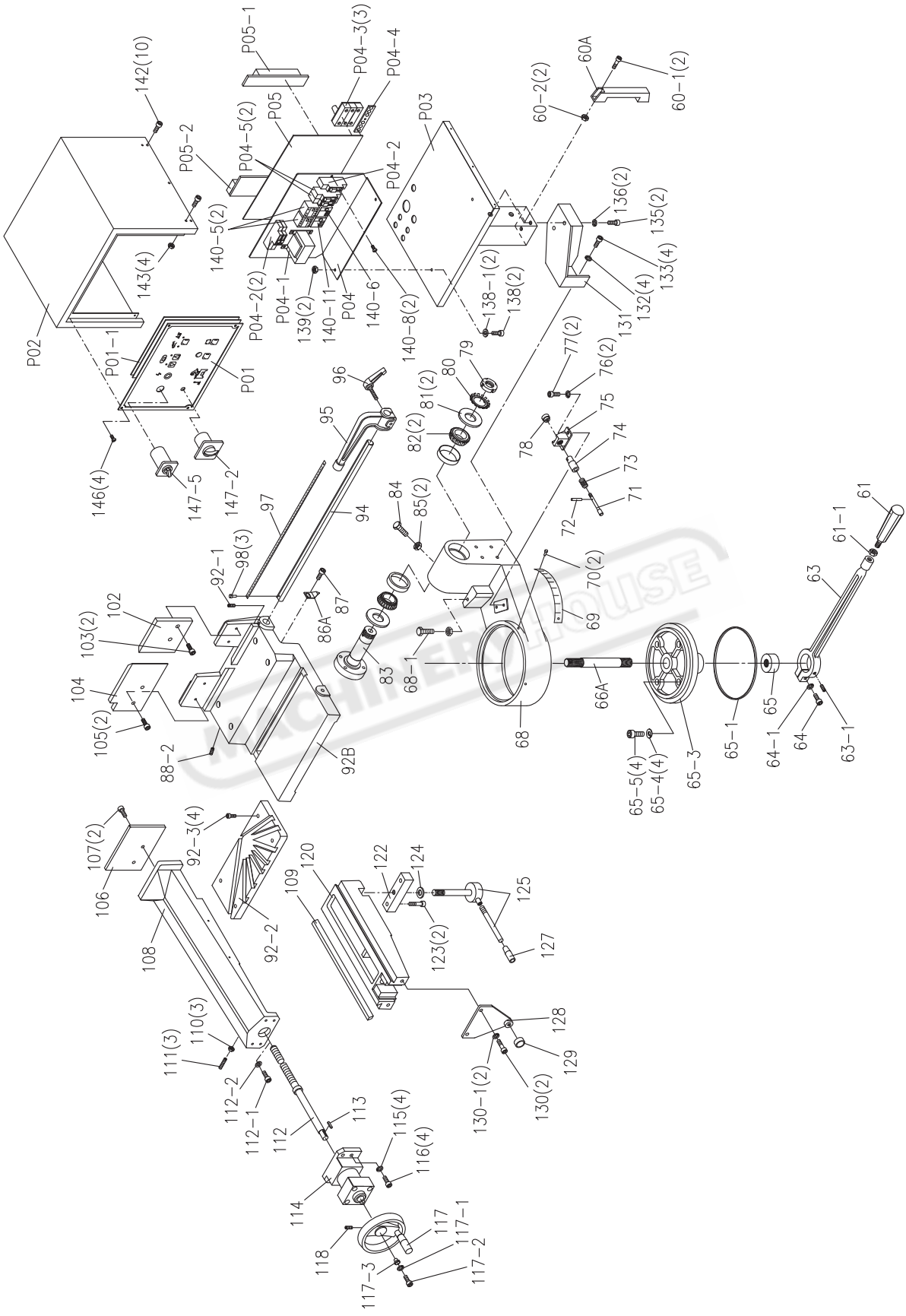
**PART LIST**

Part No.	Description	Size No.	Q'ty	Part No.	Description	Size No.	Q'ty
196	Hex. Socket Cap Screw	M4x35	2	259	Bolt		2
197	Hex. Socket Cap Screw	M10x35	4	260	Hex. Socket Cap Screw	M6x8	1
197-1	Spring Washer	M10	4	261	Blade Guard		1
198	Pipe Fitting Seat		1	262	Set Screw	M6x20	2
199	Hex. Socket Cap Screw	M5x30	2	263	Nut	M6	2
200	Coolant Switch		1	264	Centric Shaft		2
201	Hose Clamp	13mm	1	265	Ball Bearing	608ZZ	8
203	Pipe Fitting	1/4Px5/16	2	265-1	Ball Bearing	608ZZ	2
204	Hose	5/16"x40cm	1	266	E-Ring	E-7	4
205	Hose	5/16"x90cm	1	267	Blade Guide		2
206	Drive Flywheel		1	268	Hex. Socket Cap Screw	M6x25	2
207	Washer		1	269	Eccentric Shaft		2
207-1	Spring Washer	M10	1	270	Hex. Socket Cap Screw	M6x8	2
208	Hex. Cap Bolt	M10x25	1	271	Blade Guard		1
209A	Idle Flywheel Shaft		1	272	Guide Bracket		1
210	Roller Bearing	32006	2	272-1	Hex. Socket Cap Screw	M6x8	2
211	Idle Flywheel		1	273	Pipe Fitting		1
212	Star Washer	M30	1	274	Blade Guide		2
212-1	Anti-dust Cover	M30	2	275	Ball Bearing Bracket		1
213	Jam Nut	M30	1	276	Set Screw	M6x12	4
214	Oil Inlet	1/16	1	277	Hex. Socket Cap Screw	M10x20	2
215	Saw Blade		1	279	Hex. Socket Cap Screw	M8x20	2
216	Blade Cover		1	280	Brush		1
217	Plum Screw	M6x10	4	281	Brush Clamp		1
219	Round Head Screw	M4x8	2	282	Set Screw	M5x5	1
220	Nut	M4	2	283	Set Bushing		1
222	Handle		2	284	Hex. Cap Bolt	M6x12	2
223	Handle Wheel		1	285	Washer	M6	2
223-1	Thrust Bearing	51103	1	326A	Flow Control		1
223-2	Blade Tension Gauge		1	327A	Hose	2.5 meters	1
223-3	Plate		1	328A	Hose	2.0 meters	1
224	Special Spring Washer		10	329A	Hose	2.0 meters	1
225	Tension Shaft		1	330A	Hose	2.0 meters	1
229	Plate		1	331A	Hose	1.5 meters	1
230	Hex. Socket Cap Screw	M6x12	2	332A	Manifold		1
230-1	Washer	M6	2	333A	Motor		1
231	Limit Switch		1	334A	Pump		1
232	Hex. Socket Cap Screw	M4x25	2	335A	Oil Gauge		1
239	Nut	M16	1	336A	Solenoid	2D2	1
240A	Slide Bracket		1	337A	Solenoid	3C2	1
240A-1	Spring Washer	M10	3	338A	Reducing		1
240A-2	Hex. Socket Cap Screw	M10x45	3	339A	Oil Fill Port		1
240A-3	Set Screw	M10x25	1	340A	Tank Cover		1
244	Cover Plate		1	341A	Tank		1
245	Hex. Socket Cap Screw	M6x8	2	P01	Control Panel		1
246	Gib		2	P01-1	Main Board		1
247	Spring Washer	M8	6	P02	Electrical Box Cover		1
248	Hex. Socket Cap Screw	M8x20	6	P03	Electric Box Platform		1
249	Blade Guide Movable Rod		1	P04	Electric Parts Plate		1
249-1	Hex. Socket Cap Screw	M6x8	1	P04-1	Transformer		1
250	Set Screw	M6x12	4	P04-2	Fuse Block		3
251	Hex. Socket Cap Screw	M8x20	2	P04-3	Power in Fuse		3
252	Setting Bracket		1	P04-4	Grounding Plate		1
253	Hex. Socket Cap Screw	M12x50	1	P04-5	Input Fuse		2
254	Handle		1	P05	Electric Parts Plate (Rear)		1
256	Guide Bracket		1	P05-1	Dual Terminal Connector		1
257	Nozzle		1	P05-2	Connector PC Board		1

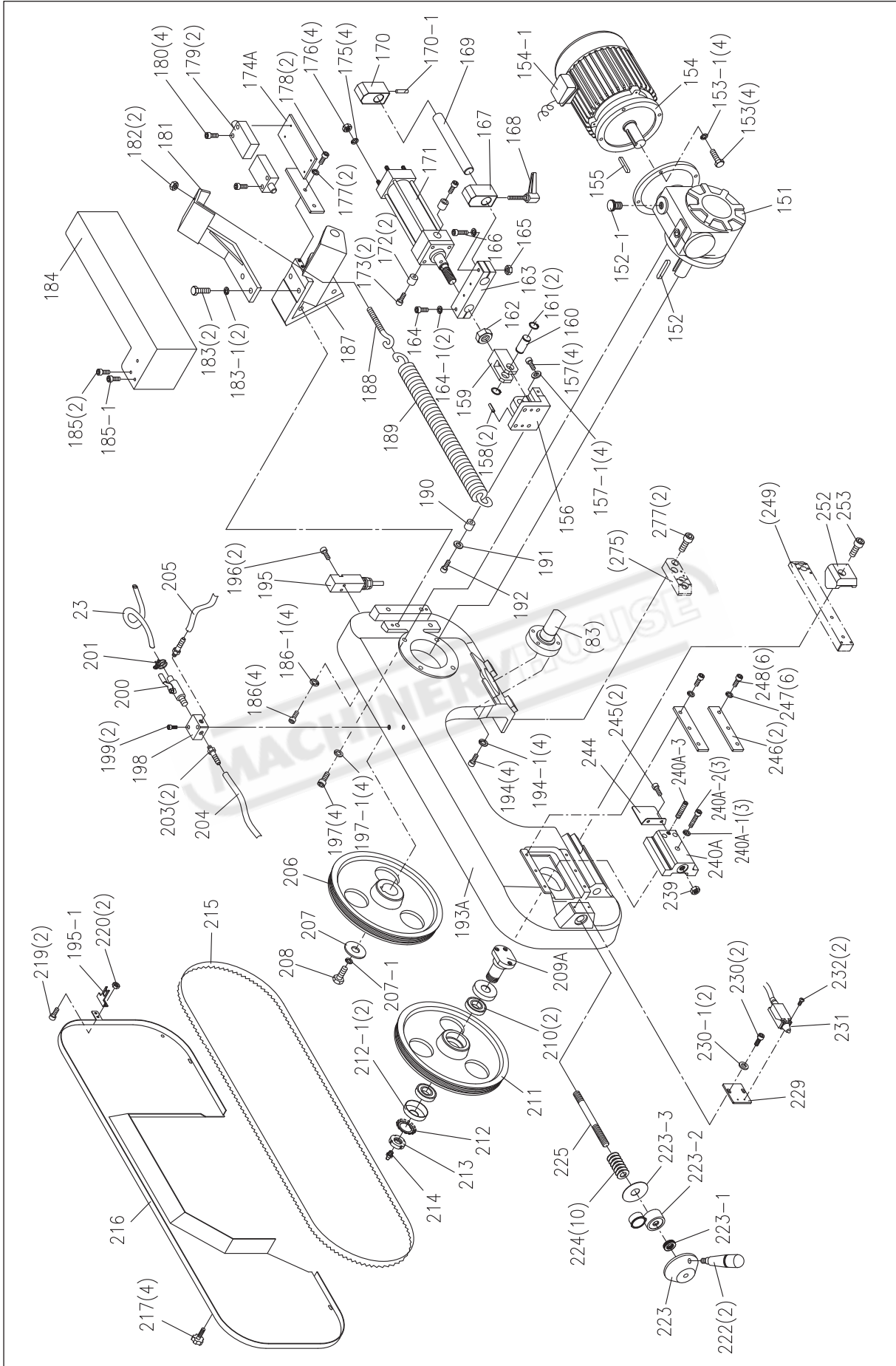
991201



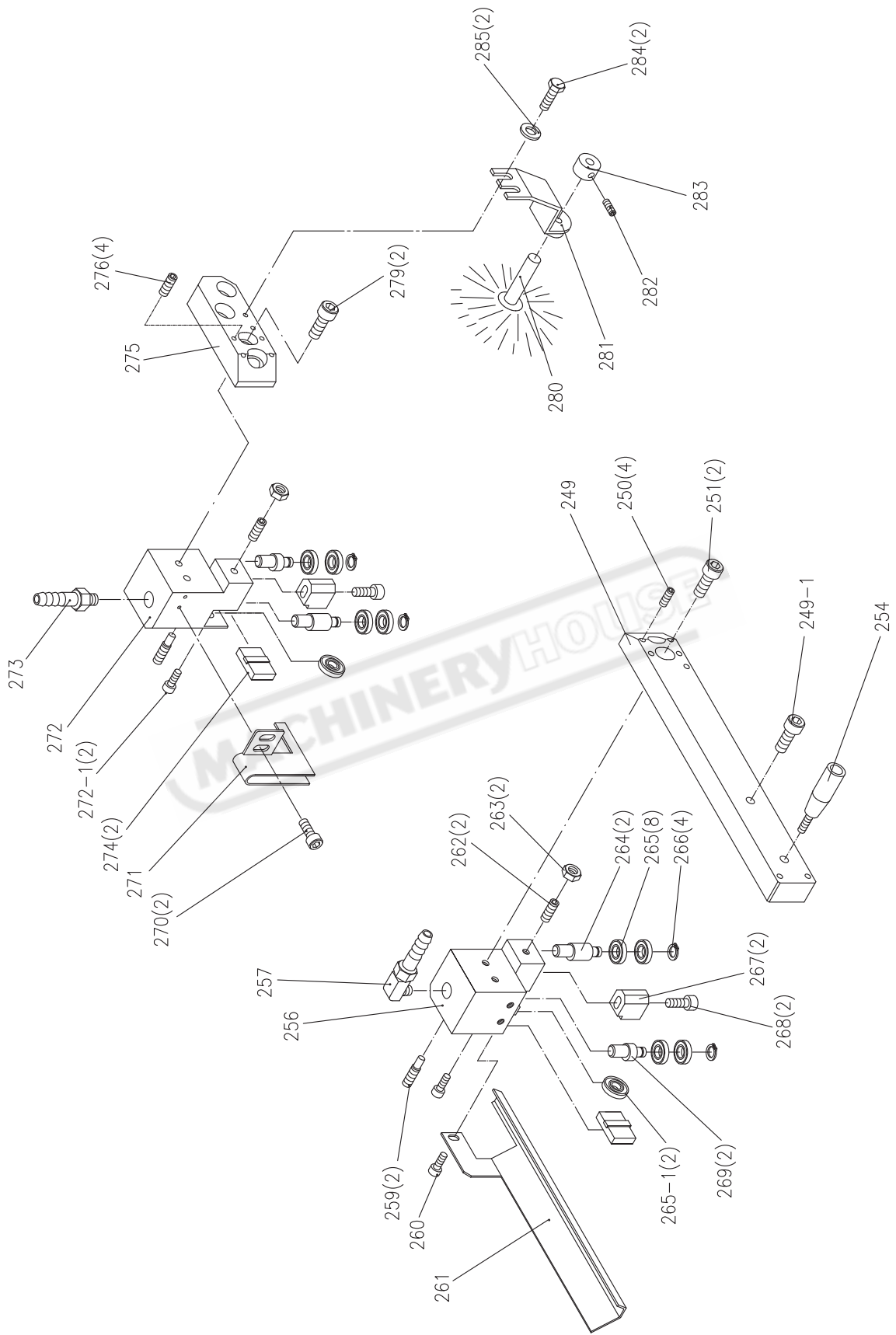
991201-V8



991201-

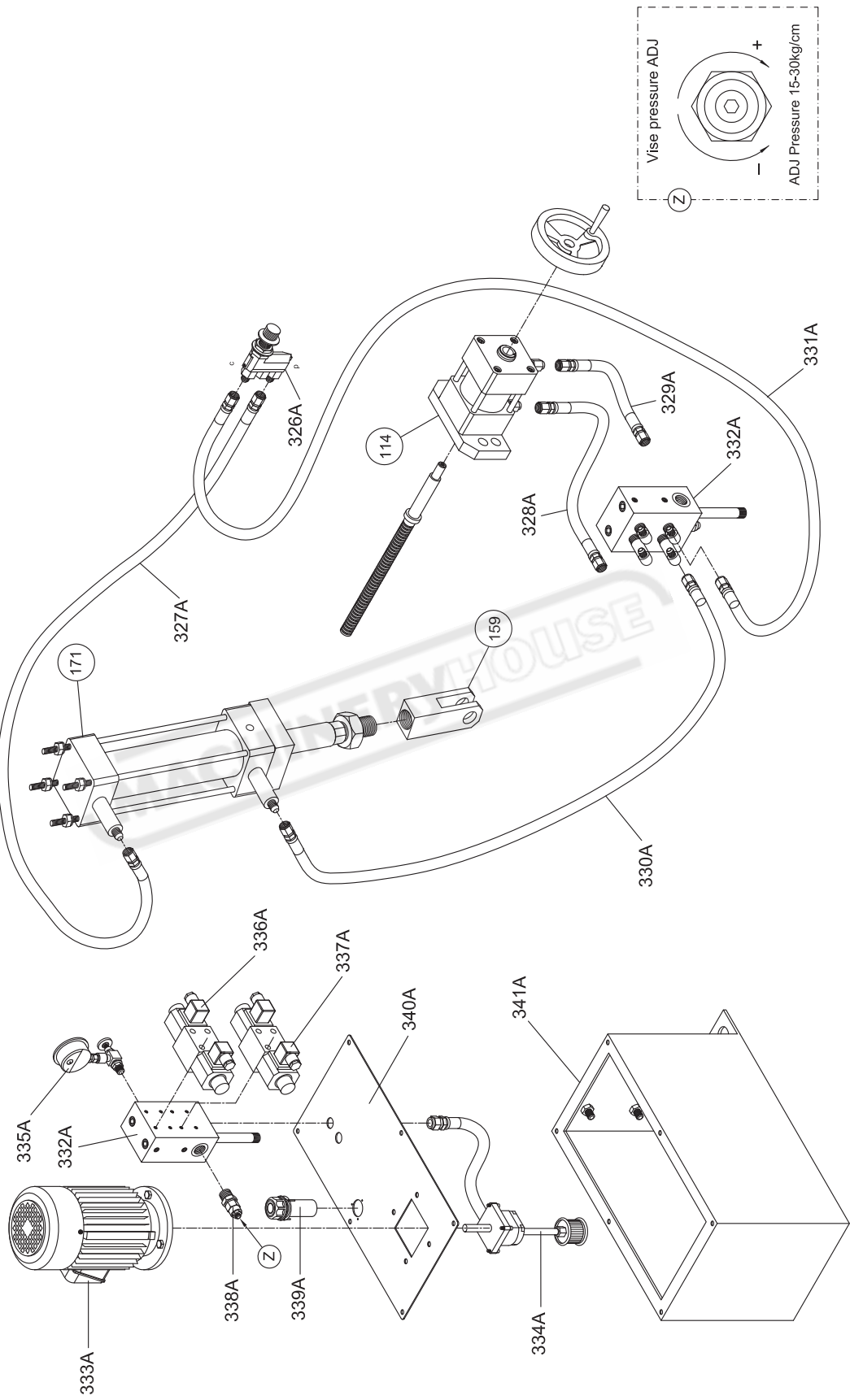


991201-



991201-V

# Semi Auto and Vise Hydraulic System



950605-